

Light and Smoke Signal

Art No. 9181600

The Light and Smoke Lifebuoy Marker produces dense orange smoke for 15 minutes and features two self contained, inversion switched, LED lights which far exceed SOLAS requirements for output and duration.

Ships are required to carry 2 markers, one mounted on each bridge wing with the brackets supplied and attached by line to a 4kg Lifebuoy. The signal is used to mark the position of a man overboard by day or night. It can be automatically deployed by releasing the attached lifebuoy, or manually activated.



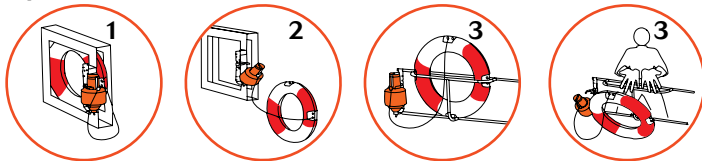
The Comet Smoke Signal Art. No 9181700 is identical, except that it does not feature the lighting system, so is an orange smoke daytime marker only.



Application

- Day and night signal attached to 4kg lifebuoy and used in an emergency to mark the position of man overboard.
- Provides 15 minutes of dense orange smoke.
- Far exceeds SOLAS requirements of 2 hours at 2 candela for light output and duration.
- Safe to use on petrol or oil covered water.
- Lithium batteries sealed for life - no annual replacement.
- Screw fit, inversion switched, LED light units.
- Automatic or manual deployment.
- Universal stainless steel mounting bracket. Usually mounted on a ships bridge wing
- Approved mounting height: 56m - but manufacturer tested to survive 100m drop into water. (SOLAS only requires 30m).
- Ideal for use on ships or rigs with high freeboard.

Operation



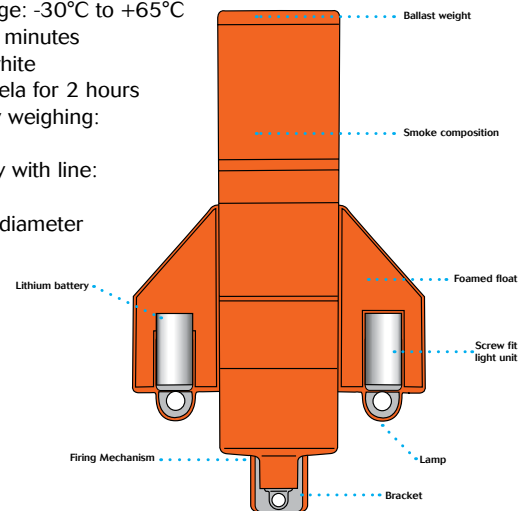
1. Signal and Lifebuoy mounted on bridge wing in ready to fire position.
2. Release locking pin and lifebuoy falls, automatically deploying marker.
3. Alternatively, manually throw lifebuoy overboard.

Packing & Transport Information

- 2 x signals in 1 fibreboard box
- Max. Gross Weight: 9.5 kg (20.94 lb.) per box
- Max. Net Weight: 7.7 kg (17 lb.)
- Measurements of fibreboard box: 36 x 27 x 40 cm (14.2 x 10.6 x 15.8 in)
- Max. Net Explosive Content per box: 2.574kg (5.67 lb.)
- Hazard class 1.4S UN 0507
- Proper shipping name: Signals, Smoke
- Other information: Passenger and cargo aircraft

Specifications

- Height: 375mm (14.76 in)
- Diameter: 183mm (7.20 in)
- Weight: 3.3kg (7.27 lb.)
- Weight – including bracket and angles: 3.85kg (8.5 lb.)
- Net Explosive Content: 1.287kg (2.84 lb.)
- Lamps (bulbs): 2 x 3.6v 2.0A
- Temperature range: -30°C to +65°C
- Burning time: 15 minutes
- Colour of light: white
- Duration: 2 candela for 2 hours
- Use with lifebuoy weighing: 4.0kg (8.82 lb.)
- Attach to lifebuoy with line: 4m (13ft) long, 9.5mm (0.37 in) diameter



Storage

This compact unit is ideally stored in good magazine conditions in an upright position, mounted to its stainless steel bracket in our original packaging. Onboard vessel: Two units are normally required to be carried. Mounted inverted and attached to a Lifebuoy. Usually positioned on each bridge wing and need a clear, uninterrupted drop into the water.

Approvals

Conforms to SOLAS 74 as amended. IMO Resolution MSC 81 (70) part 1. MED: Light & Smoke Signal - BGV 422.012, Smoke Signal - BGV 422.011. BAM-P1-0596, 0589-P1-0619.



WARNING

- Produces dense orange smoke - do not inhale.
- Do not fire in a confined space
- Keep out of reach of children
- Only for emergency use at sea

- If damaged or dented do not use
- Do not dismantle
- Keep away from source of heat
- Do not use after expiry date

DISPOSAL

- Pyrotechnics must be treated as hazardous items and must be disposed of responsibly in accordance with local regulations. For help and advice, visit our website www.comet-marine.com